

**MUNICIPALITY OF THE
DISTRICT OF WEST HANTS
LAND USE BY-LAW**

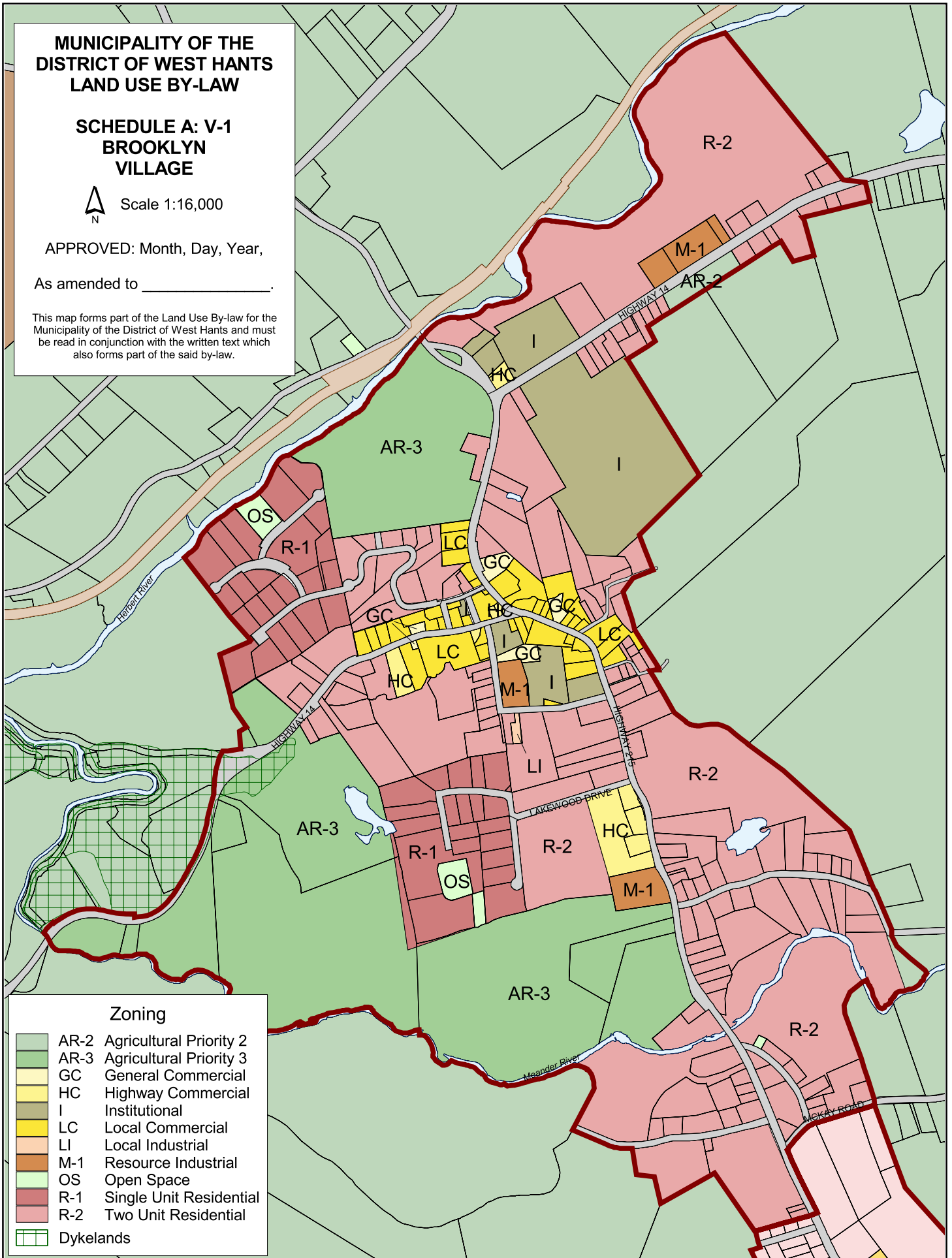
**SCHEDULE A: V-1
BROOKLYN
VILLAGE**

Scale 1:16,000

APPROVED: Month, Day, Year,

As amended to _____.

This map forms part of the Land Use By-law for the Municipality of the District of West Hants and must be read in conjunction with the written text which also forms part of the said by-law.



Zoning

- AR-2 Agricultural Priority 2
- AR-3 Agricultural Priority 3
- GC General Commercial
- HC Highway Commercial
- I Institutional
- LC Local Commercial
- LI Local Industrial
- M-1 Resource Industrial
- OS Open Space
- R-1 Single Unit Residential
- R-2 Two Unit Residential
- Dykelands