



WINDSOR-WEST HANTS AGRICULTURAL PROFILE



1 Introduction	1
2 History	1
3 Farms	2
3.1 Number of Farms	2
3.2 Size of Farms	2
3.3 Improved vs. Unimproved Area	4
3.4 Assessment	4
3.4.1 West Hants	4
3.4.2 Windsor	5
4 Farm Ownership	6
4.1 Operators	6
4.2 Types of Ownership	7
4.3 Capital and Machinery	8
4.4 Income	9
5 Crops and Livestock	9
5.1 Field Crops	10
5.2 Fruits and Vegetables	10
5.3 Livestock	11
5.4 Organic Farming	12
5.5 Greenhouse Operations	12
5.6 Forestry	12

1 Introduction

IN 1999, the Canadian agri-food industry consisted of over \$110 billion of goods and services, about nine percent of Canada’s gross domestic product.¹ Farming accounted for about one quarter of the sector while the remainder included the food processing, sales and service sectors. Between 1997 and 2000, the contribution of agricultural production and support services to the gross domestic product of Nova Scotia rose from just over \$200 million to more than \$225 million. In 2001, however, there was a decrease of over 10% in the sector’s contribution to the gross domestic product of the province.²

The agri-food sector is also the third largest employer, providing jobs to two million Canadians in 1996 (14% of the total workforce). In 2001, the Nova Scotia agricultural sector provided jobs to about 7,300 Nova Scotians while food-related industries including manufacturing, sales and service employed another large portion of Nova Scotians.

Traditionally, agriculture has played an important role in the economy of Windsor-West Hants. In 1996, agriculture was the sixth largest employment sector in Windsor-West Hants providing jobs to 610 people.

Much of the information contained in this report is based on Statistics Canada’s Agricultural Census. Since the Census does not provide a separate breakdown of the data for the Town of Windsor and Municipality of West Hants, for the most part this report takes a regional perspective on the agricultural industry in Windsor-West Hants and its contribution to both the Hants County and Nova Scotia agricultural sectors.

2 History

FORMAL AGRICULTURE and field and dyke development in the Windsor-West Hants area began with the arrival of the Acadians. By 1701 almost 200 Acadians were recorded in ‘Pisiquid’ and by the mid-1700s over

¹ Canadian Federation of Agriculture. www.cfa-fca.ca

² NS Dept of Finance, Statistics Division.

1000 Acadians had settled in the area near the mouths of the St Croix and Avon Rivers.³

The decade following the Expulsion in 1755 saw a slight decline in farming in the Minas area while the new English settlers learned how to repair and maintain the dyke system. By 1765, farming was an active industry when the first agricultural fair in Canada was held in Windsor at Fort Edward. The fair initially was held twice a year and was organized in conjunction with a weekly farm market. In 1951, the fair moved to its present location at the Windsor Exhibition Grounds. The Hants Agricultural Society was founded in 1839. It was renamed to the Windsor Agricultural Society in 1864.⁴ Thomas Chandler Haliburton was once president of this organization.

3 Farms

FARMING IN Windsor-West Hants, much like farming throughout Nova Scotia and Canada has declined over the last century. Mechanization and modern agricultural practices have led to a decrease in the number of farms and the acreage farmed while over the same period the average farm size has increased.

3.1 NUMBER OF FARMS

According to the 2001 Agricultural Census, there were 153 farms in Windsor-West Hants. The number of farms in the area has declined by over 75 percent since 1956, slightly lower than the rate of decline for the province of Nova Scotia as a whole. Between 1996 and 2001, the number of farms decreased by 19 percent, the largest decrease since 1976. Table 1 shows the change in number of farms in Windsor-West Hants in comparison with Canada, Nova Scotia and Hants County as a whole. Historically, Windsor-West Hants farms have made up about fifty percent of the total number of farms in Hants County (see Figure 1).

Table 1 – Number of Farms, 1956 - 2001

	Canada	NS	Hants Co	West Hants	
				Total	% change
1956	574,993	21,075	1,333	624	
1961	480,877	12,518	909	450	-27.9
1966	430,503	9,621	758	396	-12.0
1971	366,110	6,008	518	261	-34.1
1976*	338,552	5,434	356	178	-31.8

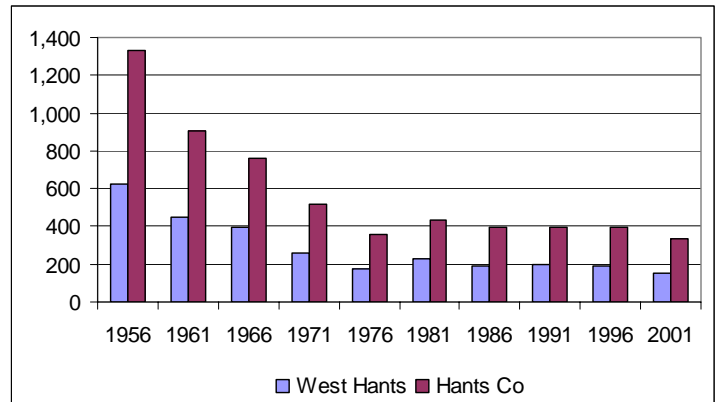
³ Maritime Dykelands: the 350 year struggle. Province of Nova Scotia, Dept. of Agriculture and Marketing, 1987.

⁴ Welcome to Hants County, in the province of Nova Scotia. no publisher, 1950.

	Canada	NS	Hants Co	West Hants	
				Total	% change
1981	318,361	5,045	431	227	27.5
1986	293,089	4,283	398	193	-15.0
1991	280,043	3,980	399	200	3.6
1996	276,548	4,453	393	189	-5.5
2001	246,923	3,923	336	153	-19.0
Change	-57.1%	-81.4%	-74.8%	-75.5%	

* In 1976 a census farm was defined as having sales of agricultural products of over \$1200 in the previous year. In other years, the requirement was only \$50 in sales or, more recently, production of goods intended for sale.
Source: Statistics Canada, Agricultural Census 1956-2001

Figure 1 – West Hants and Hants County Farms, 1956 - 2001



Source: Statistics Canada, Agricultural Census 1956-2001

3.2 SIZE OF FARMS

The 2001 census shows that about 35,000 acres of land in Windsor-West Hants are used for agriculture. The total acreage of farms in Canada has fluctuated from a high of over 174 million acres in 1966 to a low of 162 million acres in 1981. While Nova Scotia has also experienced fluctuation, Hants County and Windsor-West Hants have had steadier decline with the exception of a slight increase in 1981. The 2001 Census found the greatest decrease – over 5300 acres – in farm acreage in Windsor-West Hants since 1986. Figure 2 illustrates the change in the amount of agricultural land in Canada, Nova Scotia, Hants County and Windsor-West Hants.

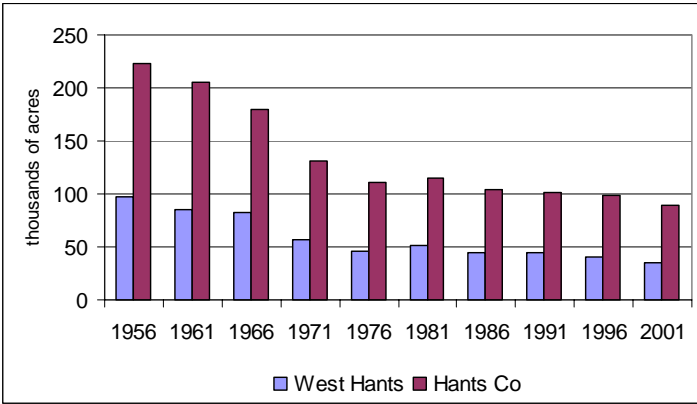
Table 2 – Total Farm Acreage, 1956 - 2001

	Canada	Nova Scotia	Hants Co	West Hants	
				Total	% change
1956	173,919,214	2,775,642	223,610	97,710	
1961	172,542,461	2,230,395	205,504	84,985	-13.0
1966	174,120,560	1,851,895	180,218	81,852	-3.7
1971	169,664,166	1,328,875	131,544	56,121	-31.4
1976	169,082,181	989,037	110,645	46,163	-17.7
1981	162,815,073	1,151,567	114,297	51,802	12.2
1986	167,601,113	1,029,211	104,482	44,584	-13.9
1991	167,423,057	981,086	100,696	44,125	-1.0
1996	168,167,475	1,055,941	98,895	40,435	-8.4

	Canada	Nova Scotia	Hants Co	West Hants	
				Total	% change
2001	166,802,197	1,005,833	89,521	35,084	-13.2
Change	-4.1%	-63.8%	-60.0%	-64.1%	

Source: Statistics Canada, Agricultural Census 1956-2001

Figure 2 – Hants County and West Hants Farm Acreage, 1956 - 2001



Source: Statistics Canada, Agricultural Census 1956-2001

In Canada, while the total number and the total area of farms are both decreasing, the total area is decreasing at a slower rate meaning that the average farm size is increasing. In Windsor-West Hants, the average farm size increased until 1976; however, since then it has remained fairly stable at just over 200 acres. The average farm size in Windsor-West Hants in 2001 was 229 acres which is over 46 percent larger than the average farm was in 1956 (Table 3).

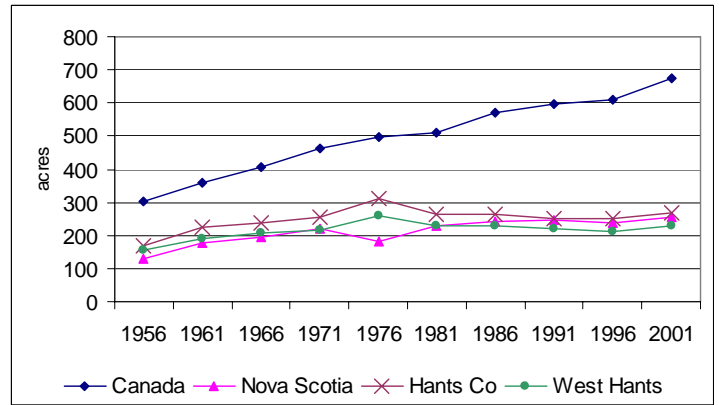
Table 3 – Average Farm Acreage, 1956 - 2001

	Canada	Nova Scotia	Hants Co	West Hants
1956	302	132	168	157
1961	359	178	226	189
1966	404	192	238	207
1971	463	221	254	215
1976	499	224	311	259
1981	511	228	265	228
1986	572	240	263	231
1991	598	247	252	221
1996	608	237	252	214
2001	676	256	266	229
Change	123.3%	94.7%	58.8%	46.4%

Source: Statistics Canada, Agricultural Census, 1956-2001

The average farm size in Windsor-West Hants is similar to the average size in Hants County and the province; however, it is much lower than the average farm size in Canada which is over 600 acres per farm (Figure 3). The large ranch-style farms in the Western provinces bring the national average up.

Figure 3 – Average Farm Size, 1956 - 2001



Source: Statistics Canada, Agricultural Census, 1956-2001

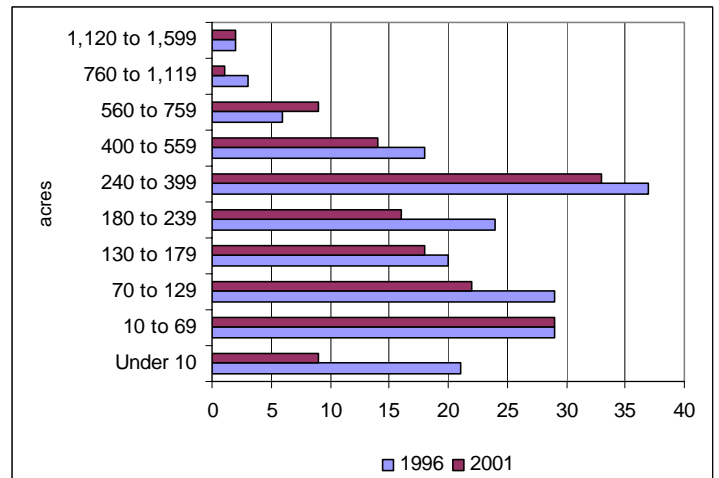
Table 4 and Figure 4 show the breakdown of Windsor-West Hants farms by size. In 2001 there were half as many farms smaller than ten acres in size than in 1996. The highest number of farms is in the 240 to 399 acres category; this is the same as in the 1971, 1976 and 1996 census years.

Table 4 – West Hants Farms by Size, 1971 - 2001

	1971	1976	1996	2001
Under 10 acres	12	7	21	9
10 to 69 acres	50	13	29	29
70 to 129 acres	40	33	29	22
130 to 179 acres	38	27	20	18
180 to 239 acres	33	27	24	16
240 to 399 acres	52	37	37	33
400 to 559 acres	22	20	18	14
560 to 759 acres	9	6	6	9
760 to 1,119 acres	2	4	3	1
1,120 to 1,599 acres	2	4	2	2
1,600 acres and over	1	0	0	0
Total Farms	261	178	189	153

Source: Statistics Canada, Agricultural Census, 1956-2001

Figure 4 – West Hants Farms by Size, 1996 - 2001



Source: Statistics Canada, Agricultural Census, 1956-2001

3.3 IMPROVED VS. UNIMPROVED AREA

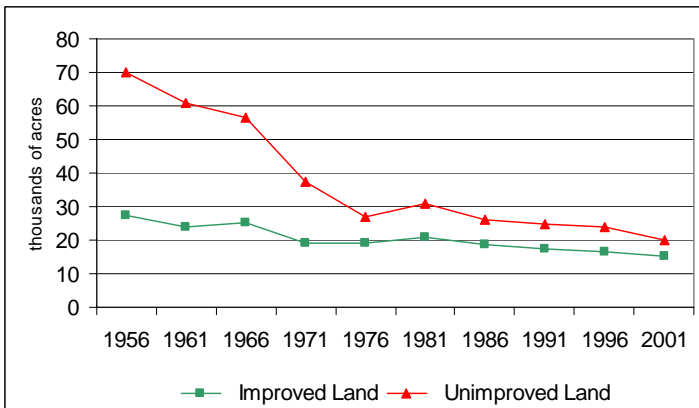
The use of farmland in Windsor-West Hants is outlined in Table 5, which divides the total farm acreage into improved and unimproved holdings and then further breaks down these categories, by general use. Since 1956, the amount of improved farmland in Windsor-West Hants has decreased at a slower rate than the unimproved land. The most significant loss has been of unimproved land that is woodland. Between 1996 and 2001, the total farm area in Windsor-West Hants decreased by 5,351 acres, or 13 percent. More than 63 percent of this, or 3,377 acres, was woodland. Pasture land also showed a significant decrease (21%) between 1996 and 2001, with 640 acres lost. Figure 5 illustrates that the loss of unimproved farmland was most significant between 1956 and 1976.

Table 5 – Use of West Hants Farmland (acres), 1956 - 2001

	1956		1996		2001	
	acres	acres	% change	acres	% change	
Total Farm Area	97,710	40,435	-58.6	35,084	-13.2	
Improved Land	27,532	16,399	-40.4	15,131	-7.7	
Under Crops	19,130	13,284	-30.6	12,662	-4.7	
Pasture	6,313	3,057	-51.6	2,417	-20.9	
Summerfallow	67	58	-13.4	52	-10.3	
Other	2,022	N/A	N/A	0	N/A	
Unimproved Land	70,178	24,036	-65.7	19,953	-17.0	
Woodland	50,100	19,366	-61.3	15,989	-17.4	
Other	20,078	4,670	-76.7	3,964	-15.1	

Source: Statistics Canada, Agricultural Census 1956, 2001

Figure 5 – Decline in West Hants Farmland, 1956 - 2001



Source: Statistics Canada, Agricultural Census, 1956-2001

3.4 ASSESSMENT

3.4.1 West Hants

The following tables and charts show the change in farm acreage and assessment over the last nine years. The assessment information also can be broken down by municipal polling district to show where the majority of farm operations are located in West Hants. Since 1994, the acreage of farmland, the total assessments and the number

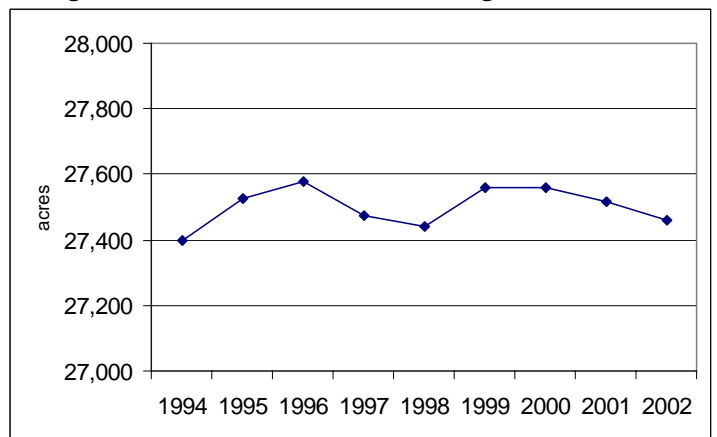
of agricultural assessment accounts has fluctuated but overall there are 50 more accounts (Table 6). Figure 6 shows the change in amount of agricultural land assessed in the Municipality between 1994 and 2001. Over the same period the average value per acre has increased by almost \$50 per acre (Table 6).

Table 6 – West Hants Agricultural Assessment, 1994 - 2002

	Acreage	Assessment	Occurrences	per acre
1994	27,396	\$18,507,100	958	\$ 676
1995	27,528	\$18,569,700	962	\$ 675
1996	27,578	\$18,598,000	969	\$ 674
1997	27,474	\$19,894,700	978	\$ 724
1998	27,441	\$19,869,000	984	\$ 724
1999	27,559	\$19,962,900	990	\$ 724
2000	27,560	\$19,950,100	997	\$ 724
2001	27,516	\$19,906,600	1,004	\$ 723
2002	27,462	\$19,870,600	1,003	\$ 724

Source: Municipality of West Hants

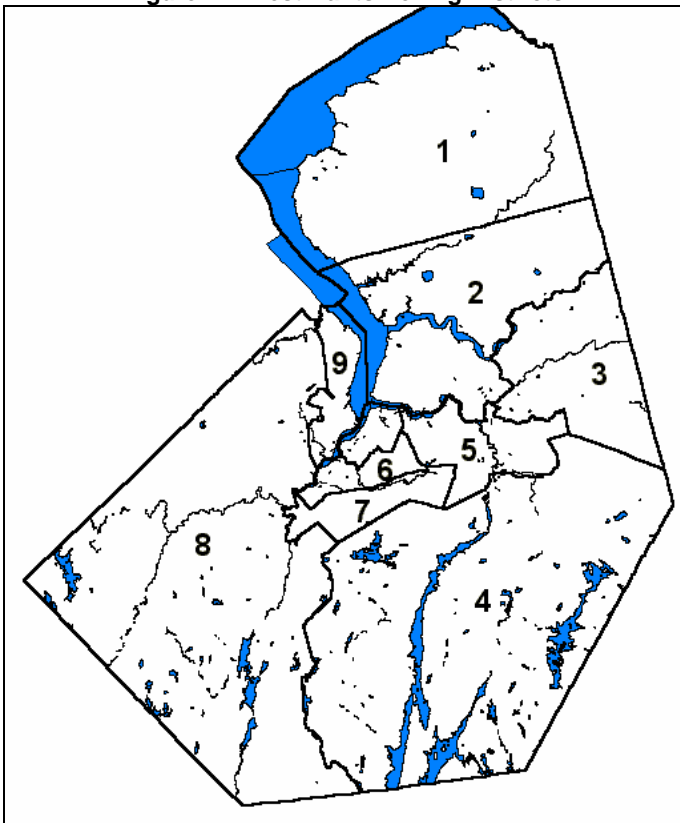
Figure 6 – Total Assessed Farm Acreage, 1994 - 2002



Source: Municipality of West Hants

District 2 – Avondale-The Burlingtons has consistently, since 1994, had the highest number of agricultural assessment accounts (27.6% in 2002) and farm acreage (29.3% in 2002) in West Hants. It also has the lowest assessment per acre of all districts (Table 7). The agricultural land in District 7 – Three Mile Plains-Martock has the highest assessment per acre, almost \$350 more per acre than District 2.

Figure 7 – West Hants Polling Districts



Dist 1	Summerville-Kempt
Dist 2	Avondale-The Burlingtons
Dist 3	Brooklyn-Scotch Village
Dist 4	St. Croix-Ellershouse-Newport Corner
Dist 5	Wentworth-Newport Station-Newport Corner
Dist 6	Three Mile Plains
Dist 7	Three Mile Plains-Martock
Dist 8	Upper Falmouth-Vaughans
Dist 9	Falmouth-Mt. Denson

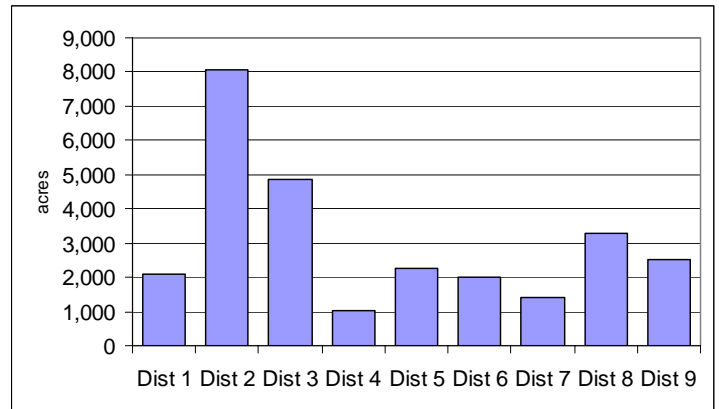
Source: Windsor-West Hants JPAC

Table 7 – Farm Assessment by Polling District, 2002

	Acreage		Assessment		Occurrences		\$ per acre
	Total	%	Total \$	%	Total	%	
Dist 1	2,103	7.6	1,246,500	6.3	84	8.4	\$593
Dist 2	8,063	29.3	4,763,700	23.9	277	27.6	\$591
Dist 3	4,845	17.6	3,472,900	17.4	159	15.8	\$717
Dist 4	1,007	3.7	640,300	3.2	36	3.6	\$636
Dist 5	2,276	8.3	1,610,400	8.1	82	8.2	\$708
Dist 6	2,006	7.3	1,868,100	9.4	77	7.7	\$931
Dist 7	1,417	5.1	1,348,200	6.8	59	5.9	\$951
Dist 8	3,284	11.9	3,087,900	15.5	143	14.2	\$940
Dist 9	2,515	9.1	1,868,600	9.4	87	8.7	\$743
Total	27,516	100.0	19,906,600	100.0	1,004	100.0	\$723

Source: Municipality of West Hants

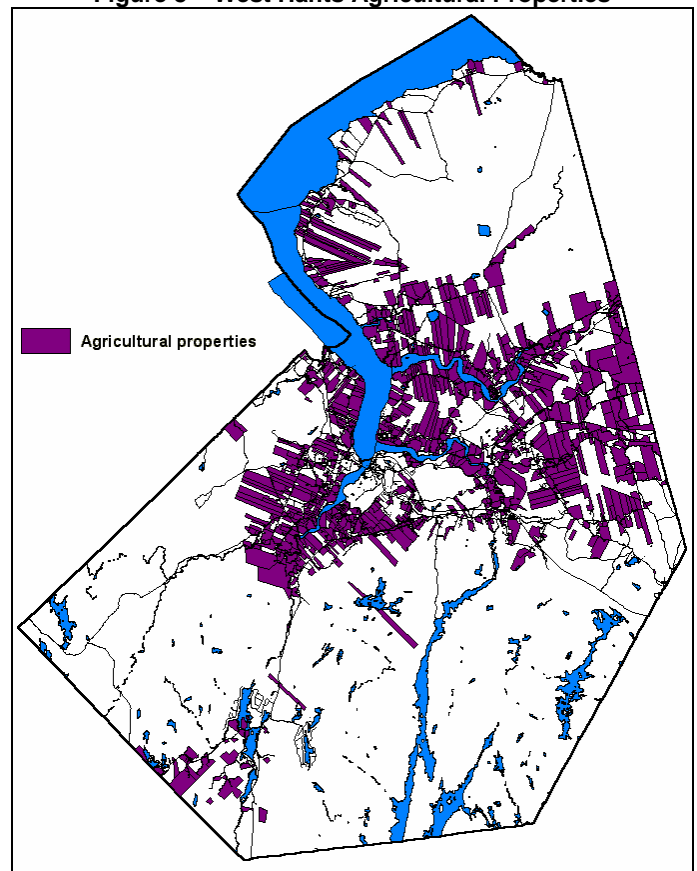
Table 8 – West Hants Farm Assessment by District, 2002



Source: Municipality of West Hants

Figure 8 shows the location of farmland in West Hants, according to assessment information. It is important to note that much of this land is near growth areas which may feel the impact of residential development if there is significant population growth in the Windsor-West Hants area.

Figure 8 – West Hants Agricultural Properties



Source: Municipality of West Hants

3.4.2 Windsor

In the Town of Windsor, the total number of agricultural assessments has remained unchanged since 1994; however the total area of farmland has decreased from 896 acres to 835 acres. The assessment of farmland has increased by

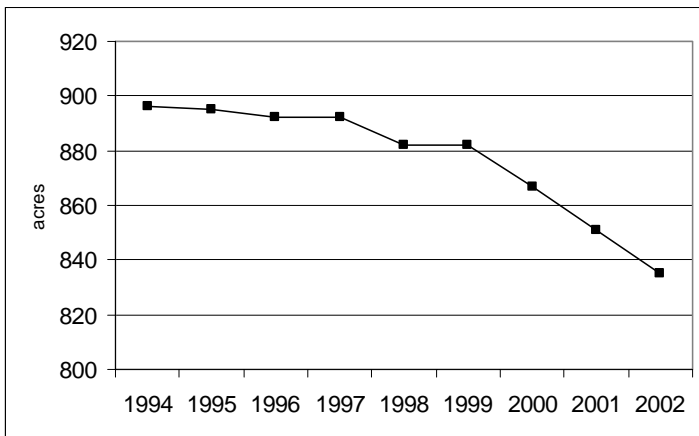
\$122 an acre in comparison to a change of only \$38 per acre in West Hants.

Table 9 – Windsor Agricultural Assessment, 1994 - 2002

	Acreage	Assessment	Occurrences	per acre
1994	896	\$851,300	38	\$950
1995	895	\$850,800	38	\$951
1996	892	\$848,600	38	\$951
1997	892	\$965,300	38	\$1,082
1998	882	\$954,800	38	\$1,083
1999	882	\$954,800	38	\$1,083
2000	867	\$927,300	37	\$1,070
2001	851	\$911,300	38	\$1,071
2002	835	\$895,000	38	\$1,072

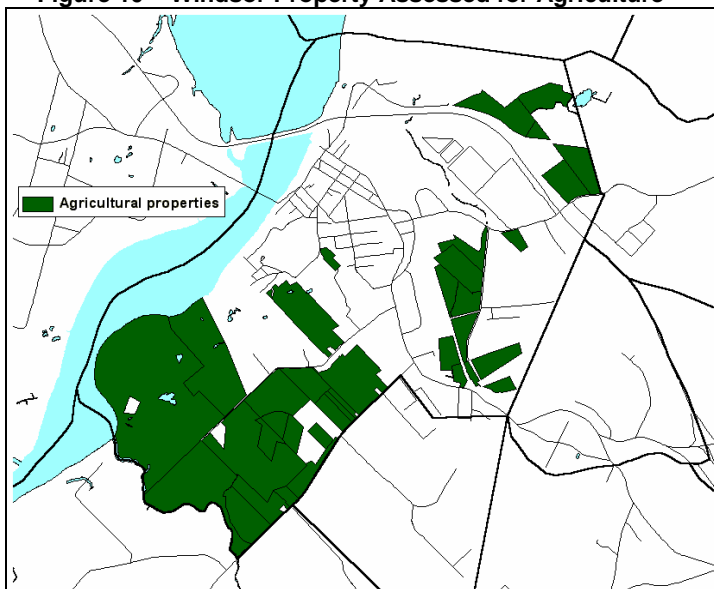
Source: Town of Windsor

Figure 9 – Total Assessed Farm Acreage, 1994 - 2002



Source: Town of Windsor

Figure 10 – Windsor Property Assessed for Agriculture



Source: Town of Windsor

4 Farm Ownership

4.1 OPERATORS

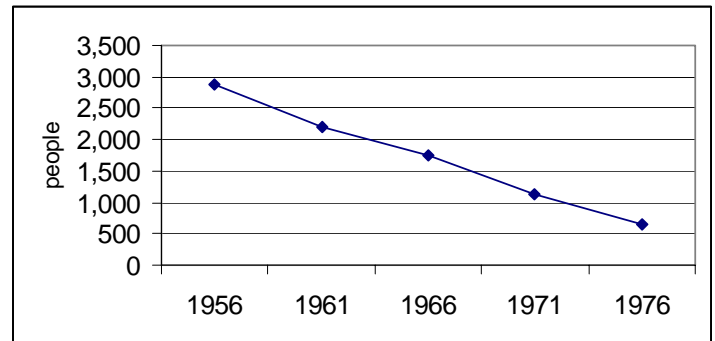
The total farm population in Nova Scotia has decreased much more dramatically than the Canadian farm population. The decline in farm population is reflective of the national trend toward urbanization. In Windsor-West Hants, the farm population decreased by 78 percent between 1956 and 1976 alone, as shown in Figure 11.

Table 10 – Farm Population, 1956 - 1996

	Canada	Nova Scotia	Hants Co	W Hants		
				Total	% of NS	% of Hants
1956	2,746,755	98,944	6,594	2,865	2.9	43.5
1961	2,128,400	58,020	4,547	2,188	3.8	48.1
1966	1,960,265	46,283	3,562	1,741	3.8	48.9
1971	1,489,565	26,977	2,356	1,123	4.2	47.7
1976	1,255,702	21,466	1,356	639	3.0	47.1
1981	1,081,637	18,116	n/a	n/a	n/a	n/a
1986	n/a	n/a	n/a	n/a	n/a	n/a
1991	865,895	12,535	n/a	n/a	n/a	n/a
1996	851,410	13,060	n/a	n/a	n/a	n/a
Change	-69.0%	-86.8%	n/a	n/a		

Source: Statistics Canada, Agricultural Census

Figure 11 – West Hants Farm Population, 1956 - 1976



Source: Statistics Canada, Agricultural Census

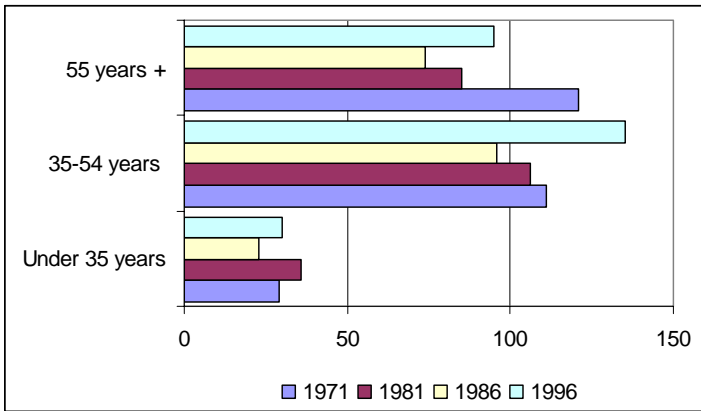
In 1996, the majority of farm operators in Windsor-West Hants were between the ages of 35 and 54. As shown in Table 11, this is a change from 1971 when most farm operators were over 55 years old. In all years reported here, there were fewer farm operators in the under 35 age category than in any other age group.

Table 11 – Age of West Hants Farm Operators, 1971 - 1996

	1971	1981	1986	1996
Under 35 years	29	36	23	30
35-54 years	111	106	96	135
55 years +	121	85	74	95
Total	261	227	193	255

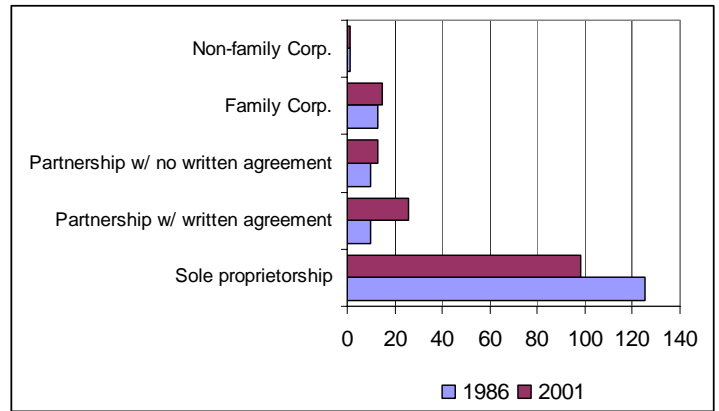
Source: Statistics Canada, Agricultural Census, 1971-2001

Figure 12 – Age of Operators, 1971 - 1996



Source: Statistics Canada, Agricultural Census, 1971-1996

Figure 13 – Farm Ownership, 1986 - 2001



Source: Statistics Canada, Agricultural Census, 1986- 2001

4.2 TYPES OF OWNERSHIP

Between 1986 and 2001, the greatest change in the type of ownership of farms in Windsor-West Hants was the increase in the number of farm partnerships with a written agreement. The federal department of agriculture has been promoting farm planning with respect to estates so this may account for the change. As illustrated in Table 12, the most common situation in both Nova Scotia and Windsor-West Hants is ownership by a single individual; however, partnerships, both legal and casual, are becoming more common.

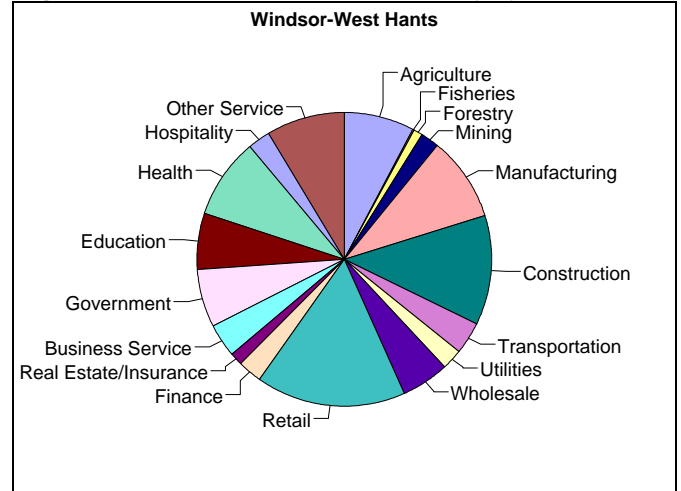
Based on the combined statistics for the Town of Windsor and the Municipality of West Hants, agriculture was the sixth largest employment sector in 1996, providing jobs for 610 people in the regions. Census statistics for the Municipality of West Hants alone, however, show the agricultural sector is even more important to the rural municipality. Table 13 shows that, in 1996, agriculture was the fourth largest employment sector in West Hants, employing 565 people. The number of people involved in the agricultural sector in West Hants alone has increased steadily since 1971 as shown in Figure 15.

Table 12 – Type of Farm Ownership, 1986 - 2001

	1986			2001		
	Nova Scotia	Hants Co	West Hants	Nova Scotia	Hants Co	West Hants
Farms	4,283	398	159	3923	336	153
Sole proprietorship	3,569	329	125	2600	206	98
Partnership w/ written agreement	214	23	10	228	23	26
Partnership w/ no written agreement	209	19	10	609	56	13
Family Corp.	222	25	13	410	47	15
Non-family Corp.	49	2	1	70	4	1
Other	20	0	0	6	0	0

Source: Statistics Canada, Agricultural Census, 1986, 2001

Figure 14 – Windsor-West Hants Industry by Sector, 1996



Windsor-West Hants	Total	%
Retail trade	1,300	16.4%
Construction	955	12.1%
Manufacturing	735	9.3%
Health and social service	700	8.8%
Other service	680	8.6%
Agricultural and related service	610	7.7%
Government service	505	6.4%
Educational service	490	6.2%
Wholesale trade	415	5.2%
Business service	290	3.7%
Transportation and storage	280	3.5%

Windsor-West Hants	Total	%
Finance and insurance	210	2.7%
Accommodation, food and beverage service	195	2.5%
Communication and other utility	180	2.3%
Mining (including milling), quarrying and oil well	160	2.0%
Real estate operator and insurance agent	110	1.4%
Logging and forestry	80	1.0%
Fishing and trapping	10	0.1%
All	7,920	

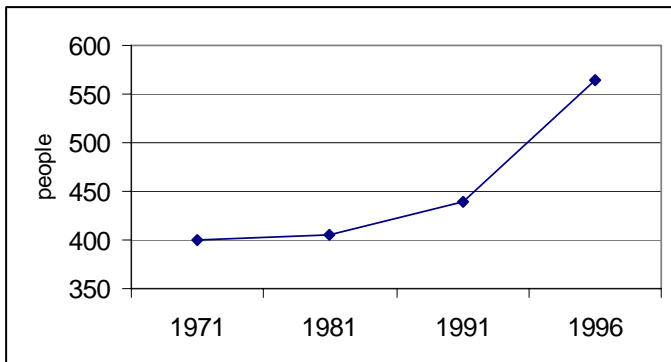
Source: Statistics Canada, 1996

Table 13 – West Hants Labour Force by Industry, 1971 - 1996

West Hants	1971	1981	1991	1996
Retail trade			860	1,065
Construction	635	670	880	860
Manufacturing	440	565	735	630
Agricultural and related	400	405	440	565
Health and social service	185		665	520
Other service industries	80		355	505
Government service	255	425	520	440
Educational service	245		470	365
Wholesale trade	525	800	300	330
Transportation and storage	200	325	310	235
Business service		1,060	130	190
Communication and other utility	110		230	145
Accommodation, food and beverage service	95		195	145
Mining (including milling), quarrying and oil well	205	155	160	135
Finance and insurance		115	195	135
Logging and forestry	55	60	90	80
Real estate operator and insurance agent	50		20	75
Fishing and trapping	0	0	0	10
All industries	3,840	4,580	6,570	6,435

Source: Statistics Canada

Figure 15 – West Hants Farm Employment, 1971 - 1996



Source: Statistics Canada

4.3 CAPITAL AND MACHINERY

The capital value of farms in Nova Scotia has increased dramatically since 1971 from \$206 million to almost \$1.7 billion in 2001. In Windsor-West Hants, it grew from \$11

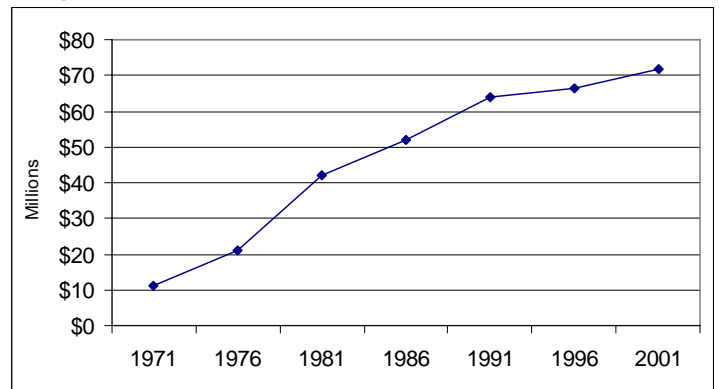
million in 1971 to almost \$72 million in 2001, just under 40 percent of the capital value of all farms in Hants County and over four percent of the Nova Scotia total.

Table 14 – Total Farm Capital, 1971 - 2001

	Nova Scotia \$	Hants Co \$	West Hants		
			Total \$	% of NS	% of Hants
1971	206,085,000	21,966,100	11,055,800	5.4%	50.3%
1976	446,832,243	44,893,653	20,940,486	4.7%	46.6%
1981	897,562,841	92,566,674	42,111,000	4.7%	45.5%
1986	966,739,486	110,873,556	51,951,693	5.4%	46.9%
1991	1,158,923,945	139,967,415	63,745,245	5.5%	45.5%
1996	1,360,035,456	146,728,739	66,409,576	4.9%	45.3%
2001	1,687,042,164	180,751,041	71,952,756	4.3%	39.8%
Change	718.6%	722.9%	550.8%		

Source: Statistics Canada, Agricultural Census

Figure 16 – West Hants Farm Capital Value, 1971 - 2001



Source: Statistics Canada, Agricultural Census, 1971-2001

In all areas of Nova Scotia, the average capital value of farms has increased by over 3000 percent. This reflects not only the increased size of farms but also the increase in the value and amount of mechanized equipment. Table 16 shows that between 1976 and 1996 the total value of farm machinery increased by \$4 million with the biggest increases in the use of tractors, balers and, of course, personal computers.

Table 15 – Average Capital Value, 1971 - 2001

	Nova Scotia	Hants Co	West Hants	
			Actual	Current*
1976	\$82,229	\$126,106	\$117,643	\$368,301
1981	\$177,911	\$214,772	\$185,511	\$361,177
1986	\$225,715	\$278,577	\$269,180	\$402,057
1991	\$291,187	\$350,796	\$318,726	\$378,346
1996	\$305,420	\$373,356	\$351,373	\$388,795
2001	\$430,040	\$537,950	\$470,279	\$470,279
Change	5529.5%	5670.1%	4676.8%	921.3%

*Current Value is the value converted to the equivalent 2001 dollars.

Source: Statistics Canada, Agricultural Census, 1971-2001

Table 16 – Farm Equipment in West Hants, 1976 - 2001

	1976	2001
Total farm machinery and equipment value	\$7,241,505	\$12,113,002
Total tractors	320	385
Total farm trucks	183	192
Cars and other passenger vehicles	151	68
Total grain combines	19	15
Mower conditioners	N/A	71
Total balers	114	136
Forage harvesters	N/A	36
Use of personal computers for farm management	N/A	50

Source: Statistics Canada, Agricultural Census, 1976, 2001

4.4 INCOME

Between 1981 and 1991 gross farm receipts in Windsor-West Hants increased from \$7.9 million to \$18 million; however, receipts declined in both 1996 and 2001 with 2001 receipts totalling \$14.9 million. In the same period, however, operating expenses rose from about \$6.9 million to just over \$14.0 million. The average farm income in Windsor-West Hants, based on receipts less expenses, was only about \$6,900 in 1981 rising to about \$12,000 in 1996 but dropping to \$5,700 in 2001 (Table 20).

Table 17 – West Hants Gross Farm Receipts, 1981 - 2001

	# of farms	Gross Receipts	Average
1981	227	\$7,993,422	\$35,213
1986	193	\$11,192,625	\$57,993
1991	200	\$18,016,519	\$90,083
1996	189	\$16,501,657	\$87,310
2001	153	\$14,894,205	\$97,348

Source: Statistics Canada, Agricultural Census, 1981-2001

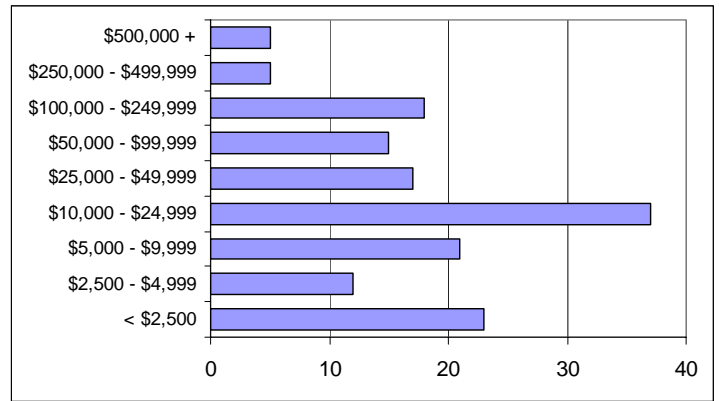
As shown in Figure 17, in 2001, the highest percentage of farms in Windsor-West Hants had receipts of between \$10,000 and \$24,999. Only about 18 percent of farms had receipts in excess of the average of just over \$97,000.

Table 18 – Breakdown of Farms Receipts, 1981 - 2001

	1981	1986	1991	1996	2001	
					#	%
< \$2,500	74	53	32	31	23	15.0
\$2,500 - \$4,999	30	21	33	22	12	7.8
\$5,000 - \$9,999	35	27	28	28	21	13.7
\$10,000 - \$24,999	40	35	40	43	37	24.2
\$25,000 - \$49,999	14	13	21	25	17	11.1
\$50,000 - \$99,999	16	21	14	6	15	9.8
\$100,000 - \$249,999	13	12	16	21	18	11.8
\$250,000 - \$499,999	5	8	11	10	5	3.3
\$500,000 +	0	3	5	3	5	3.3

Source: Statistics Canada, Agricultural Census, 1981-2001

Figure 17 – West Hants Farm Receipts, 2001



Source: Statistics Canada, Agricultural Census, 2001

Table 19 – Farm Operating Expenses, 1981 - 2001

	Hants Co	Average	West Hants	Average
1986	\$24,061,006	\$60,455	\$10,749,686	\$55,698
1996	\$32,551,640	\$82,829	\$14,657,728	\$77,554
2001	\$47,573,547	\$141,588	\$14,012,585	\$91,586

Source: Statistics Canada, Agricultural Census, 1981-2001

Table 20 – Farm Income less Expenses, 1981 - 2001

	West Hants	Average
1981	\$1,051,960	\$6,876
1986	\$442,939	\$2,895
1991	\$1,486,023	\$9,713
1996	\$1,843,929	\$12,052
2001	\$881,620	\$5,762

Source: Statistics Canada, Agricultural Census, 1981-2001

5 Crops and Livestock

AS Table 21 SHOWS, there is a wide variety of farm types in Windsor-West Hants. The most common are beef farms followed by miscellaneous specialty and dairy farms. Miscellaneous specialty farms include those not otherwise listed such as fur farms (fox, mink, and chinchilla); sheep, goat, deer, llamas, emus, bison, ostrich, turkey and rabbit farms as well as honey operations. Given the large number of sheep enumerated in Windsor-West Hants (see Table 27) it is likely that sheep farms make up a large number of these miscellaneous specialty farms in Windsor-West Hants. In 2001, there were no commercial wheat or grain farms indicating that these crops are grown more for farm use rather than for sale.

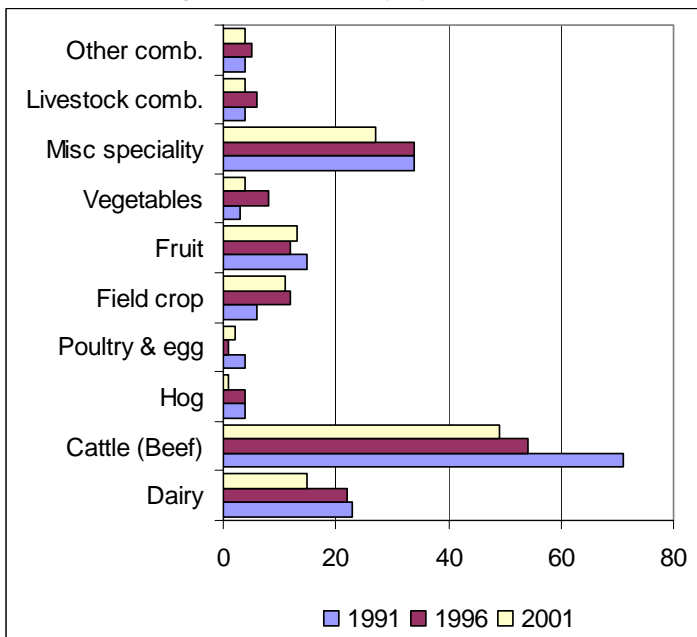
Table 21 – Farms by Type, 2001

	Nova Scotia	Hants Co	West Hants			
			Total	%	% of Hants	% of NS
Farms w/total gross farm receipts > \$2,499	3,318	292	130	100.0	44.5	3.9
Cattle (Beef)	828	87	49	37.7	56.3	5.9

	Nova Scotia	Hants Co	West Hants			
			Total	%	% of Hants	% of NS
Miscellaneous specialty	757	63	27	20.8	42.9	3.6
Dairy	375	64	15	11.5	23.4	4.0
Fruit	653	20	13	10.0	65.0	2.0
Field crop (except grain and oilseed)	242	26	11	8.5	42.3	4.5
Other combination	101	7	4	3.1	57.1	4.0
Livestock combination	73	9	4	3.1	44.4	5.5
Vegetable	97	9	4	3.1	44.4	4.1
Poultry and egg	111	4	2	1.5	50.0	1.8
Hog	65	3	1	0.8	33.3	1.5
Wheat	1	0	0	0.0	0.0	0.0
Grain and oilseed (except wheat)	15	0	0	0.0	0.0	0.0

Source: Statistics Canada, Agricultural Census, 2001

Figure 18 – Farms by Type, 1996



Source: Statistics Canada, Agricultural Census, 1991-2001

5.1 FIELD CROPS

In Windsor-West Hants, between 1981 and 1996, there was a shift in the amount of land used for growing crops. In 1981, 94 of the 227 farms reporting had 70 to 129 acres of cropland. In 1986, the majority of farms had 240 to 399 acres of cropland. Since 1991, the majority of farms had only 10 to 69 acres of cropland. In 2001, two farms reported having over 400 acres. Figure 19 shows this shift.

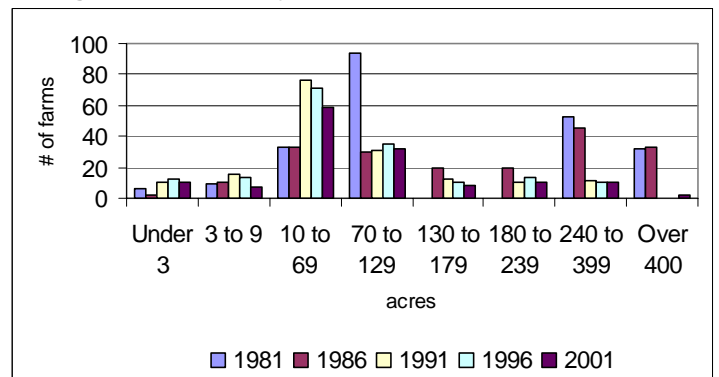
Table 22 – Crops and Summerfallow by Size, 1981 - 2001

	1981	1986	1991	1996	2001
Total Farms	227	193	165	164	138
Under 3 acres	6	2	10	12	10

	1981	1986	1991	1996	2001
3 to 9 acres	9	10	15	13	7
10 to 69 acres	33	33	76	71	59
70 to 129 acres	94	30	31	35	32
130 to 179 acres	0	20	12	10	8
180 to 239 acres	0	20	10	13	10
240 to 399 acres	53	45	11	10	10
400 to 559 acres	19	22	0	0	1
560 to 759 acres	6	5	0	0	1
760 to 1,119 acres	3	3	0	0	0
1,120 to 1,599 acres	3	3	0	0	0
1,600+ acres	1	0	0	0	0

Source: Statistics Canada, Agricultural Census, 1971-2001

Figure 19 – Farms by Acres of Cropland, 1981 - 2001



Source: Statistics Canada, Agricultural Census, 1981-2001

Table 23 shows the largest field crops in Windsor-West Hants and compares them to the production of both Hants County and Nova Scotia as a whole. In 2001, with over 10,000 acres, alfalfa and other tame hay and fodder crops were the biggest crop in Windsor-West Hants. In addition, Windsor-West Hants produced over 68 percent of the acres of oats in Hants County.

Table 23 – Acres of Field Crops, 2001

	Nova Scotia	Hants Co	West Hants		
			Total	% of NS	% of Hants
Winter wheat	4,671	x	92	2.0	x
Oats	6,753	602	415	6.1	68.9
Barley	11,783	716	151	1.3	21.1
Total rye	1,499	35	15	1.0	42.9
Corn for silage	7,425	1,474	468	6.3	31.8
Alfalfa and alfalfa mixtures	31,706	4,094	1,702	5.4	41.6
All other tame hay and fodder crops	153,413	20,366	8,757	5.7	43.0
Potatoes	5,114	20	5	0.1	25.0

Source: Statistics Canada, Agricultural Census, 2001

5.2 FRUITS AND VEGETABLES

West Hants does not have the fruit tree production of neighbouring Kings County with just nineteen farms reporting, but it does have the vast majority of acreage in

Hants County. Apples, by far, are the most common with 277 acres in apple production in 2001, accounting for 98 percent of the acres of apples in Hants County but less than 5 percent of the Nova Scotia total.

Compared with Hants County and Nova Scotia, very little land in Windsor-West Hants is dedicated to berry production. Strawberries are the most common berry crops with 21 acres for cultivation and harvest.

Table 24 – Area of Fruits, Berries and Nuts, 2001

Acres	Nova Scotia	Hants Co	West Hants		
			Acres	% of NS	% of Hants
Total area of fruits, berries and nuts	46,084	1,772	462	1.0	26.1
Total producing area of fruits, berries and nuts	25,321	1,056	373	1.5	35.3
Apples total	6,546	335	330	5.0	98.5
Apples producing	5,720	281	277	4.8	98.6
Pears total	235	6	5	2.4	93.3
Pears producing	222	3	3	1.5	100.0
Strawberries total	1,039	110	29	2.8	26.4
Strawberries producing	777	76	21	2.7	28.0
Blueberries total	37,508	1,231	13	0.0	1.1
Blueberries producing	18,017	625	8	0.0	1.3
Grapes total	268	71	71	26.5	100.0
Grapes producing	225	58	57	25.6	99.1

Source: Statistics Canada, Agricultural Census, 2001

Grapes are becoming a significant crop, with only four West Hants vineyards accounting for one quarter of the Nova Scotia total acreage. The total grape production area in Windsor-West Hants has increased by over 50 percent since 1996.

Table 25 – West Hants Grape Production, 1996 - 2001

	1996		2001		
	Farms	Acres	Farms	Acres	Change
Total Grapes	4	49	4	71	44.9%
Producing Grapes	4	37	4	58	56.8%

Source: Statistics Canada, Agricultural Census, 2001

In 1996, 142 acres of vegetables were reported in production in Windsor-West Hants. Table 26 shows the most common crops including 54 acres of green or wax beans and 27 acres of squash, pumpkin and zucchini. In the 2001 census, Windsor-West Hants production accounted for over six percent of acreage of tomatoes in Nova Scotia.

Table 26 – Acres of Vegetables, 2001

	Nova Scotia	Hants Co	West Hants		
			Acres	% of NS	% of Hants
Green or wax beans	1,257	84	54	4.3	64.2
Squash, pumpkins & zucchini	533	36	27	5.1	76.1
Other vegetables	x	18	9	n/a	49.4
Cabbage	369	12	7	1.9	59.2
Carrots	2,020	x	7	0.3	n/a
Lettuces	190	15	7	3.9	49.3
Spinach	68	x	4	5.3	n/a
Tomatoes	68	7	4	6.2	60.0
Beets	66	11	3	4.7	28.2
Broccoli	633	7	3	0.4	38.6
Cauliflower	227	6	2	0.7	28.3
Cucumbers	104	7	2	1.8	27.1
Green peas	1,072	5	1	0.1	16.0
Peppers	41	4	1	2.2	22.5
Sweet corn	697	82	x	n/a	n/a
Rutabagas & turnips	360	13	x	n/a	n/a
Rhubarb	112	4	x	n/a	n/a
Shallots, green & seed onions	22	3	x	n/a	n/a
Dry onions	563	x	x	n/a	n/a
Asparagus, producing	24	x	x	n/a	n/a
Asparagus, non-producing	10	x	x	n/a	n/a
Celery	10	x	x	n/a	n/a
Chinese cabbage	2	x	x	n/a	n/a
Radishes	2	x	x	n/a	n/a
Brussels sprouts	x	--	x	n/a	n/a
Total vegetables	8,763	339	205	2.3	60.6

Source: Statistics Canada, Agricultural Census, 2001

5.3 LIVESTOCK

According to the 2001 census, over eight percent of all sheep and lambs in Nova Scotia are in Windsor-West Hants, over 2,000 animals. Windsor-West Hants also produces over 78 percent of the pigs in Hants County. While East Hants is better known for dairy cows, with over 80 percent of the animals in Hants County, Windsor-West Hants has almost 65 percent of the beef cattle in Hants County.

Table 27 – Livestock, 2001

	Nova Scotia	Hants Co	West Hants		
			Total	% of NS	% of Hants
Cattle and calves	108,401	14,859	5,609	5.2	37.7
Dairy cows	23,918	4,697	874	3.7	18.6

	Nova Scotia	Hants Co	West Hants		
			Total	% of NS	% of Hants
Beef cows	26,500	2,806	1,838	6.9	65.5
Hens and chickens	4,084,846	423,073*	189,654*	4.6	44.8
Pigs	124,935	4,488	3,518	2.8	78.4
Sheep and lambs	24,896	2,559	2,066	8.3	80.7

* Estimated based on number of farms reporting hens and chickens in 2001. Hants County: 58 farms, West Hants: 26 farms.

Source: Statistics Canada, Agricultural Census, 2001

According to the 2001 census, almost seven percent of the total number of horses in Nova Scotia are in Windsor-West Hants. This, however, does not accurately enumerate the number of horses in West Hants since horse stables are not counted under the agricultural census but are considered a business operation. In addition, horses owned by people who do not fill out the agricultural census would not be counted. Other types of livestock are less common as is shown in Table 28.

Table 28 – Other Livestock, 2001

	Nova Scotia	Hants Co	West Hants		
			Total	% of NS	% of Hants
Horses/ ponies	3,009	443	209	6.9	47.2
Goats	2,051	143	73	3.6	51.0
Bee Colonies	7,927	980	454	5.7	46.3
Rabbits	741	232	x	n/a	n/a
Llamas/ alpacas	201	x	x	n/a	n/a
Deer (ex. wild)	500	x	x	n/a	n/a
Wild boar	x	x	x	n/a	n/a
Mink	501,533	x	x	n/a	n/a
Fox	3,432	0	0	0.0	0.0
Bison	x	0	0	0.0	0.0
Elk	x	0	0	0.0	0.0

Source: Statistics Canada, Agricultural Census, 2001

5.4 ORGANIC FARMING

The 2001 census was the first to enumerate certified organic farms. To be included in the census as organic, a farm must be accredited by one of about 45 certification bodies. Between 1999 and 2000, the number of certified organic farms in Canada increased by 34 percent. According to the census, there are five certified farms in Windsor-West Hants, almost 22 percent of the total in Nova Scotia (Table 29).

Table 29 – Certified Organic Farms, 2001

	Nova Scotia	Hants Co	West Hants		
			Total	% of NS	% of Hants
Total farms	23	6	5	21.7	83.3
Fruits, vegetables or greenhouse products	20	5	4	20.0	80.0

	Nova Scotia	Hants Co	West Hants		
			Total	% of NS	% of Hants
Field crops (grains, oilseeds, etc.)	6	3	3	50.0	100.0
Animals or animal products (meat, milk, eggs, etc.)	10	3	3	30.0	100.0
Other (maple syrup, herbs, etc.)	5	2	2	40.0	100.0

Source: Statistics Canada, Agricultural Census, 2001

5.5 GREENHOUSE OPERATIONS

According to the 2001 census, Windsor-West Hants has over 16 percent of the total area of greenhouse operations in Nova Scotia (Table 31). The ten greenhouses in Windsor-West Hants produce a wide variety of products on the equivalent of over 11 acres of land.

Table 30 – Greenhouse Operations, 2001

	Nova Scotia	Hants Co	West Hants		
			Total	% of NS	% of Hants
Farms Reporting	207	32	10	4.8	31.3
Greenhouse flowers	149	21	6	4.0	28.6
Greenhouse vegetables	80	21	8	10.0	38.1
Other greenhouse products	34	5	2	5.9	40.0

Source: Statistics Canada, Agricultural Census, 2001

Table 31 – Area of Greenhouse Operations, 2001

	Nova Scotia	Hants Co	West Hants		
			Total	% of NS	% of Hants
Total m² under glass, plastic or other protection	282,472	57,905	45,939	16.3	79.3

Source: Statistics Canada, Agricultural Census, 2001

5.6 FORESTRY

The agricultural census reports some forestry figures for Windsor-West Hants where the forestry production occurs in conjunction with farm operations. In 1996, Statistics Canada included Christmas tree farming in the agricultural census for the first time. In West Hants, only eight operations reported Christmas tree production in 1996 accounting for only one percent of the total number of Christmas tree farms in Nova Scotia. By 2001, this number had dropped to four farms with only 43 acres of Christmas trees. These farms are, on average, significantly smaller than other Christmas tree farms in Nova Scotia.

Table 32 – Christmas trees, 1996

	Nova Scotia	Hants Co	West Hants		
			Total	% of NS	% of Hants
Farms	808	21	8	1.0	38.1
Total Acres	28,618	611	183	0.6	30.0
Average	35.4	29.1	22.9		

Source: Statistics Canada, Agricultural Census, 1996

Table 33 – Christmas trees, 2001

	Nova Scotia	Hants Co	West Hants		
			Total	% of NS	% of Hants
Farms	535	12	4	0.7	33.3
Total Acres	23,450	429	43	0.2	10.0
Average	44	36	11		

Source: Statistics Canada, Agricultural Census, 2001

In 2001, only one farm in Windsor-West Hants reported maple syrup production. Due to the privacy standards of Statistics Canada no further information is available about the operation.

Table 34 – Taps on maple trees, 2001

	Nova Scotia	Hants Co	West Hants		
			Total	% of NS	% of Hants
Farms	943	87	1	0.8	16.7
# of Taps	13,174,824	1,073,802	x		

Source: Statistics Canada, Agricultural Census, 2001

West Hants farms sold over \$300,000 worth of forestry products in 2001, 2.5 percent of the total production in Nova Scotia. The average farm in Windsor-West Hants brought in almost \$11,000 in forest product revenue, about \$3,000 less than the Nova Scotia average.

Table 35 – Sales of forest products, 2001

	Nova Scotia	Hants Co	West Hants		
			Total	% of NS	% of Hants
Farms	943	87	29	33.3%	3.1%
Sales	\$13,174,824	\$1,073,802	\$327,259	30.5%	2.5%
Average	\$13,971	\$12,343	\$11,285		

Source: Statistics Canada, Agricultural Census, 2001

If you have any questions or would like further information, please contact:

Windsor-West Hants Planning Department

76 Morison Drive Windsor/West Hants Industrial Park; PO Box 2230 Windsor, NS B0N 2T0
 902-798-6900 (ph) 902-798-8553 (fax) www.windsorwesthantsplanning.ns.ca